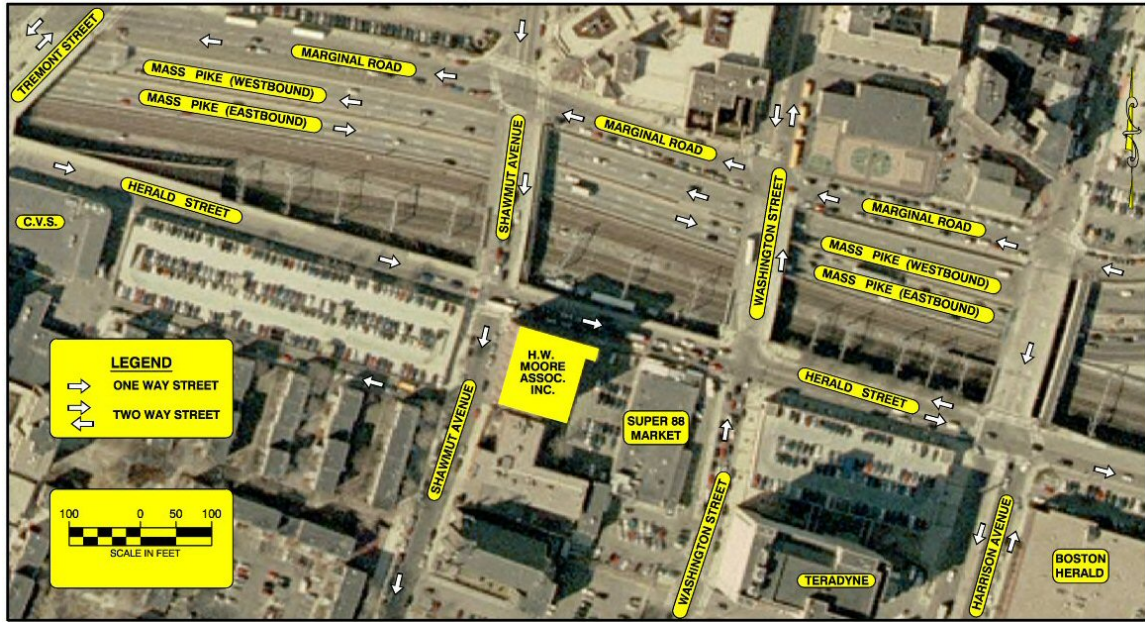


## DIRECTIONS TO H.W. MOORE ASSOCIATES, INC.



**H. W. Moore Associates, Inc.** is located at 112 Shawmut Avenue, Boston, MA 02118 on the 4<sup>th</sup> floor of a 6-story red brick building located on the corner of Shawmut Avenue and Herald Street abutting the south side of Mass Pike.

### **From the North:**

Take I-93 south over the Leonard P. Zakim bridge and into the tunnel. Take the Mass Pike exit and peel off to the right before getting onto the Mass Pike at the Albany Street sign. This puts you heading west on Marginal Road. Go to the 3<sup>rd</sup> light and take a left onto Shawmut Avenue. Go one block (crossing over the Mass Pike). 112 Shawmut Avenue is the 6 story brick building diagonally across the Herald Street on the left.

### **From the West:**

Take the Mass. Pike east and get off at the Copley Square exit which places you eastbound on Stuart Street. Take a right at the 4<sup>th</sup> light onto Arlington Street. At the 2<sup>nd</sup> light (after crossing over the Mass Pike) bear left onto Herald Street (there is a CVS on the right). Proceed to the 1<sup>st</sup> light (corner of Herald Street and Shawmut Avenue) 112 Shawmut Avenue is the 6 story brick building in front of you.

### **From the South:**

Take I-93 north to exit 20, (the Airport / South Station-Frontage Road exit). Immediately bear left at the South Station-Frontage Road Detour. Take a left at the 2<sup>nd</sup> light onto East Berkeley Street. Take a right at the 3<sup>rd</sup> light onto Washington Street. Go straight through the 1<sup>st</sup> blinking light and take a left at the third light (including the blinking light) onto Marginal Road. Take a left at the 1<sup>st</sup> light onto Shawmut Avenue. Go 1 block (crossing over the Mass Pike). 112 Shawmut Avenue is the 6 story brick building diagonally across the Herald Street on the left.

### **From the M.B.T.A.:**

Take the Orange line to the New England Medical Center stop, walk to Tremont Street exit when exiting the T-station, walk down the street towards the bridge away from the Wang Center. Keep the Mass Pike Towers on your right, Josiah Quincy School on you left. Continue walking over the Mass Pike, we are in the 6-story brick building on the corner

There is 2 hour parking on Shawmut Ave.

Any questions, call us: 617-357-8145